

# BRUNTON

---

## RESIDENTIAL



**SELE COURT, HEXHAM**

**£1,150 Per Month**



# BRUNTON

---

## RESIDENTIAL







# BRUNTON

---

## RESIDENTIAL



# BRUNTON

---

## RESIDENTIAL



Welcome to this charming terraced house located in the desirable area of Sele Court, Hexham. This delightful property boasts two well-proportioned bedrooms, making it an ideal choice for couples, small families, or individuals seeking a comfortable living space.

Upon entering, you will find a welcoming reception room that offers a perfect setting for relaxation or entertaining guests. The house has been thoughtfully refurbished, ensuring a modern and fresh atmosphere throughout. One of the standout features of this home is the spacious conservatory, which provides an abundance of natural light and serves as a lovely space to enjoy your morning coffee or unwind after a long day.

The kitchen is equipped with a Range Master cooker, perfect for those who enjoy cooking and entertaining. The property is offered unfurnished, allowing you the freedom to personalise the space to your taste and style.

The property provides one downstairs WC and one well-appointed bathroom, this home meets all your essential needs. The location in Hexham is highly sought after, known for its rich history and vibrant community. You will find local amenities, schools, and parks within easy reach, making it a convenient place to live.

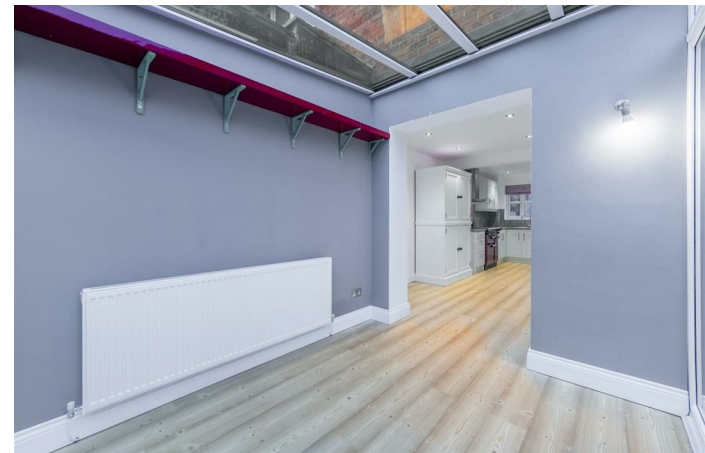
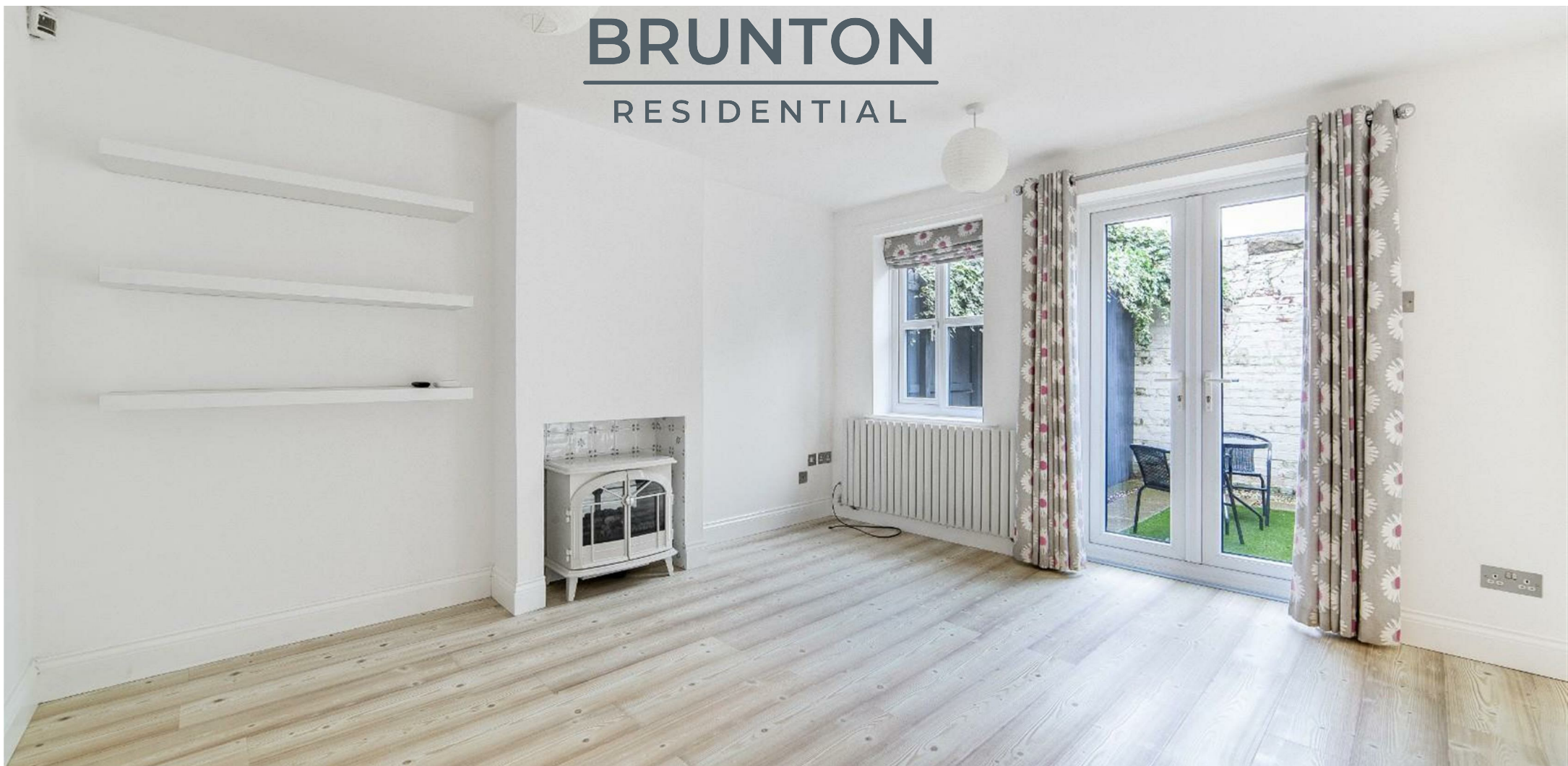
This property is available now, presenting an excellent opportunity for those looking to settle in a charming and well-connected area. Don't miss your chance to make this lovely house your new home.



# BRUNTON

---

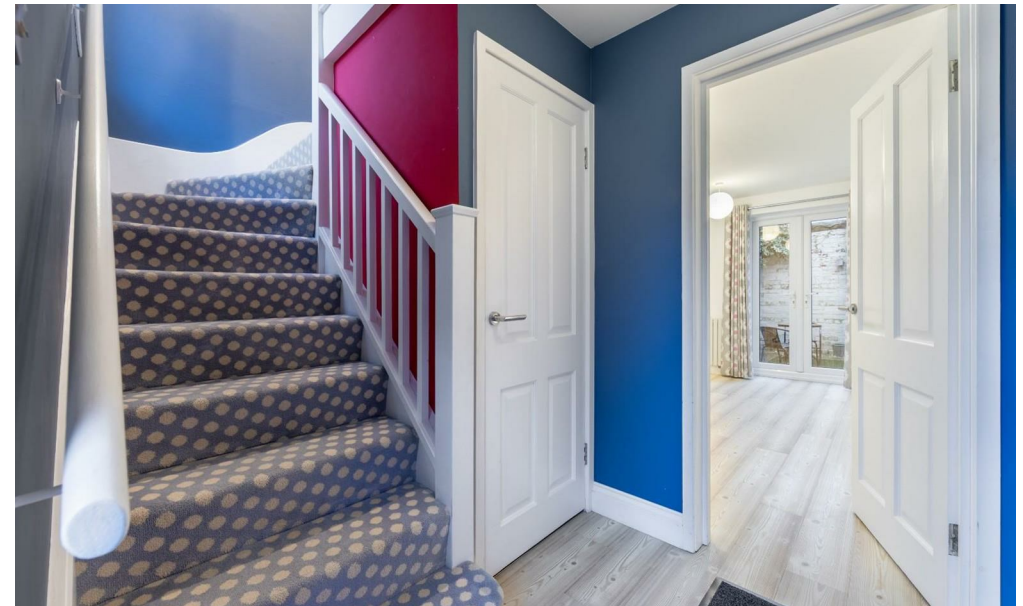
## RESIDENTIAL



# BRUNTON

---

## RESIDENTIAL



# BRUNTON

---

## RESIDENTIAL

TENURE :

LOCAL AUTHORITY :

COUNCIL TAX BAND : D

EPC RATING : C

D



Energy Efficiency Rating		
	Current	Potential
Very energy efficient - lower running costs		
(92 plus) A		
(81-91) B		
(69-80) C		
(55-68) D		
(39-54) E		
(21-38) F		
(1-20) G		
Not energy efficient - higher running costs		
	72	79
England & Wales		EU Directive 2002/91/EC

Environmental Impact (CO <sub>2</sub> ) Rating		
	Current	Potential
Very environmentally friendly - lower CO <sub>2</sub> emissions		
(92 plus) A		
(81-91) B		
(69-80) C		
(55-68) D		
(39-54) E		
(21-38) F		
(1-20) G		
Not environmentally friendly - higher CO <sub>2</sub> emissions		
England & Wales		EU Directive 2002/91/EC